

# FAIRPORT LITTLE LEAGUE INC.



## Baseball 12 and Under

---

## International League

---

### Manager / Coaches Packet 2022 Season

- Letter to Managers and Coaches from Board of Directors
- Coaching Issues / Philosophy
- Safety Rules
- Lyndon Road Complex Rules
- Team Organization; Pre game / post game checklist
- International League local rules
- Umpire Vouchers (Bronco, International)
- Umpire Evaluation Form (Bronco, International)
- Preseason Practice Schedule
- Game Schedules
- Practice Field Maps
- Game Lineup Worksheet
- Good Sportsmanship Policy
- Code of Conduct
- Some Friendly Advice
- Volunteer Form for Managers and Coaches

**International League Director**

Bill Hartnett 329-0883

Bill.f.Hartnett@gmail.com

## Letter to Managers and Coaches from the Board of Directors

Dear Manager:

Thank you for managing a Little League Team this year. You and the other managers have the most important influence on the success of our baseball season. As a manager you have an enormous responsibility which takes a good deal of time and effort toward the players. Our primary goal is to teach the game of baseball, and to provide a worthwhile and pleasurable experience for the players. Some key points to remember:

As managers, you are teachers of:

1) Baseball, sportsmanship, discipline, respect for rules, respect for authority, and respect for fellow players.

2) Baseball should be fun. We know it is more fun to win but your challenge is to be able to balance winning with losing and still have fun. Winning at all costs has no place in our program. Every player should feel as if they are a member of the team. It is not the intent of our program to play only nine of the best players with everyone else on the bench. It is our intent and philosophy that every player should be a member of the team and should play in all the games.

3) The game is for the players and not for the gratification of the managers/coaches, parents and friends.

4) The game must be won by the players on the field, not by the disruptions from the dugout or from parents/friends in the stands

5) Respect for the rules is very important, understanding the rules is an important part of your job. We must also add that respect for those umpiring the game is of the utmost importance not only by the managers/coaches/team members but the parents/friends in the stands.

Thanks again and best wishes for an enjoyable and worthwhile baseball experience.

Your Board of Directors

Coaches and managers must role model these principles for the kids

Use specifics when coaching – telling a kid to “just throw strikes” is useless

If you have a problem at a game, find a Director – guys and gals with red hats

Call International Director if problems are not resolved

Coaches are responsible for the conduct of their fans at games. Call me if problems are not getting resolved.

**Practice** – it is where the kids learn the skills. Plan them out ahead. Use lots of different drills. Repetitions are important, but keep the drills fresh. Running one drill for 30 minutes is way too long. Keep all the kids involved (use all the coaches and parents too). Try using a “3 team scrimmage” to supplement batting practice. Try new drills. Never go past 2 hours; 1 ½ hours is recommended.

Preseason practices are scheduled. During that time, virtually all fields are in use. After opening day, practice fields are not scheduled; it is first come, first served

Every year, the teams that practice win some games, and the teams that don't, don't.

Baseball is a team sport. Every player will contribute to the team.

### **Safety Rules/Issues**

Coaches must teach safe throwing (eye contact), swinging of bat, equipment

There is **no on deck circle**. The player can take a couple warm up swings at the plate when he goes up to hit. Only one batter at a time.

No sliding head first, unless returning to a base. See rule 7.08 a 4

No throwing of equipment, even gloves. 1st time - warning; 2nd time - out of game

Throwing the bat after a swing – warning the 1<sup>st</sup> time, removal from game the 2<sup>nd</sup> time. Penfield's feeling is that there is no rule for just throwing your bat by the hitter, unless the Umpire feels the intent would fall under un-sportsman conduct.

Pitchers must wear a helmet while warming up. Penfield will honor this rule for all games in Fairport.

Managers - Always have medical release forms at practices and games

Check field condition before practices and games. Bases must be set in all the way.

Accident reports – fill out and give to Director (mail slot)

Keep first aid kit stocked; extra stuff available at concession stand, or call Director. If an injury occurs at Lyndon, use ice from concession stand, not an ice pack. Never use chemical ice packs on the face.

Uniform – no shorts, including practice. Dress properly in cold weather. Catchers MUST wear cups. Catcher's masks must have throat guards. Cups are suggested for all players. Infielders not wearing cups are taking a huge risk. No metal cleats.

NO NAMES on uniforms.

No jewelry, except medical tags.

Take batting practice before each game in the batting cages.

Adults cannot warm up pitchers. Any player warming up a pitcher must wear a catcher's mask. Warm-ups in practice area require 3rd player to protect catcher.

Never leave kids behind at a game or practice

Pitching – observe the rest rules. Rest rules will be based on pitch counts

Lightning – take shelter - leave the complex – go to your cars.

### **Lyndon Road Complex Rules**

There is no warming up, playing catch, or swinging bats in the open areas between the fields at any time. Batting practice is not allowed within 30 minutes of game time (violation results in suspension). These are safety issues.

No parking on Lyndon Road.

No smoking and no alcohol at the complex.

No bicycles and no pets at the complex.

No noisemakers allowed.

Parents who are not coaches should not be in the dugout. Absolutely no siblings in the dugout.

Keep players and other kids off the fences.

Swearing, harassing umpires, or other inappropriate behavior may result in being asked to leave the complex.

Spectators are not permitted behind the backstop.

No soft toss - hitting hard balls into backstops

## OTHER

Each team works the concession stand once during the year. This provides needed revenue to the program. All teams must participate.

Team Picture Day (date, time to be announced) - All players should be there for the team picture in full uniform, even if you do not intend on purchasing a picture.

## **Team Organization**

Have a team meeting at the beginning of the season, including the parents

Get a team parent *quickly* for tokens, pictures, fund raising, concession stand duty. They should also call the head of the Booster Club

International uses teenage umpires. See Sportsmanship Policy for guidelines on appropriate and inappropriate interactions – when and how to provide feedback, etc.

Set up a calling tree, email – rainouts, schedule changes. Make sure parents know hot line number.

Communicate game and practice schedules

Check your mail slot at Lyndon every time you are there

## **Equipment**

First Aid kits – keep stocked; always have at games and practices

Bag has practice balls in it as well as a Dick's Sporting Goods bucket. The new balls are Game balls.

**Do not** give out balls supplied by the League as “player of the game” balls. Balls used during games become your supply of practice balls.

Check equipment condition. Call the Director if you need replacements. Monitor certain items such as throat guards.

End of year – We will arrange an equipment drop-off. DO NOT leave your bag in the concession stand or shed after the last game.

Set up a routine to make sure you always have two game balls for each game.

Encourage players to bring water bottles to games and practices

### **Pre-game / Post-game Checklist**

*Before the game:*

Do your lineup – batting order and fielding positions. Put the batting order in your scorebook and on the tear off card you’ll hand the other manager.

Bring at least two game balls (in case of ball over fence). The Home Team is responsible to provide the baseballs needed to play the game. It is the normal practice in Penfield that a player hitting a home run, is given the ball upon retrieval.

*At the field before the game: Penfield Teams will assist when asked!*

Both teams are responsible for field preparation. Rake the field as needed, add dirt. Get bases if needed, make sure they are set in completely. Check mound condition, repair as needed.

Have kids warm up. Visiting team should do infield practice, then the home team – leave the players on the field and start the game

Go over key rules with umps and coaches (plate ump covers home and 3<sup>rd</sup>, field ump 1<sup>st</sup> and 2<sup>nd</sup>; infield fly; overthrows; collisions; strike zone, ground rules, etc.)

Give game ball to ump

Team parent should get tokens (if team has decided to do tokens)

*After the game:*

Teams shake hands after game.

Have the kids pick up trash in the dugout, then give them their tokens

Get the game ball back, make sure you have all your helmets, equipment

Say some positive things about the game

Winning team manager submit pitcher eligibility statistics with game results on Fairport Little League web site a day after the game

Complete umpire voucher (suggest doing in 4th or 5th inning)

### **Fairport International and Penfield AAA League Rules**

Fairport LL closely follows the Little League Rules of Baseball issued by the organization in Williamsport, PA. We are allowed to alter some rules to best fit the objectives of our league and town.

Review the rule book. All rules apply except as noted below.

#### ***GAME LOGISTICS:***

Nine defensive players

The first team listed on the schedule is the home team and occupies the first base dugout.

Do your defensive lineup before the game – suggest using worksheet

**Fairport will follow the rule in place for Penfield which states a player is required to only play three innings in the field. For example, a player could play their three innings all in right field.**

A player who has thrown 41 pitches during a game cannot assume the position of catcher thereafter.

Batting is continuous – all players bat in continuous order, whether in the field or not. Free defensive substitution (except pitching – see that section).

Managers exchange batting orders (rosters) and pitcher eligibility forms before the game. No changes can be made to the batting order during the game except for injuries. Notify the opposing manager of late arrivals, kids leaving early.

A game can begin with 8 players. There is no automatic out. If players show up late, add them to the bottom of the order. If a team has less than 8 players at the start time, it is a forfeit. Suggest having a scrimmage, so the kids can play. If a player leaves early, and then returns before game is complete, at the discretion of the Manager the player can be entered back into the original slot in the batting order.

Keep statistics – outs, runs, pitch count

### ***GAME RULES:***

Bat diameter cannot exceed 2 ¼ inches. Length < 33” (consistent with rule book). Donuts are not allowed.

Pitchers cannot wear sweat bands. Their gloves must be uniform in color, not white or gray. Pitchers cannot go to the mouth while on the mound.

Coaches must be in the dugout when not coaching bases. Limit 4 adults in dugout.

“Time” – only umpires grant time.

No leading. Runners can advance when ball crosses plate. See rule book for rules on players who leave the base early. No balks except catcher’s balk. Intentional walks – pitcher must pitch to batter.

“Phantom tags” are not allowed. First time is a warning, 2<sup>nd</sup> time is removal from game.

Faking a bunt, pulling back, and taking a swing is not allowed. Batter is out.

**The Penfield and Fairport teams do not have to play the un-caught third strike. Batter is out!**

Infield fly rule is in effect. It is a re-constructable play, so meet and discuss the play after it is over if needed.

### **OVERTHROWS:**

- When the ball is overthrown at 1<sup>st</sup> or 3<sup>rd</sup>, and the fence stops the ball, the ball is in play and runners may advance at their own risk
- If the ball goes over or under a fence, or gets stuck in it, the ball is dead and runners advance to the base they are going to plus one base.



Managers conferring with pitcher – see Rule 8.06

Coaches are not allowed on the field during the game unless a player is injured or permission is granted by the umpire.

Coaching bases – if players are helping, they must wear helmets.

No talking to the opposing team (catcher, bench), and **no harassing umpires**.

Appeals – permissible in International. Umpires may also make calls without an appeal.

**Maximum of 5 runs per inning**, if the overage is due to a homerun hit over the fence. If a team is behind by 15 runs at the end of the 4<sup>th</sup> inning, the losing manager has the right to call the game, but every player must have batted at least once. Suggest doing a scrimmage at that point so the kids can play baseball. For the 2022 games, all innings will have a maximum of 5 runs. All games will be played with a two-hour time limit. Meaning an inning cannot start after the two hours have elapsed. If the team trailing is within the 5 run max rule, the inning can be completed. If at the two hour time limit the team leading is up by more than 5 runs the game is over with a hard stop.

### ***SCHEDULES:***

2 hour time limit if another game follows (weekends). Weekday games must start at 6:15 pm. Do not start an inning after 8:30 pm. Games can end in ties due to darkness or the 2 hour limit. All other games should be finished. If it gets dark during an inning and conditions are unsafe, stop the game, and the results revert back to the last completed inning.

If darkness or rain causes a game to be halted, it is considered a complete game if four or more innings have been completed. If a game is called earlier, it shall be resumed exactly where it left off. All records, including pitching, shall be counted.

A pitcher who completes an interrupted game cannot pitch in another game that day unless he starts that game as a pitcher. No other pitcher who pitches in the completion of an interrupted game can pitch in another game that day.

School and church functions, and rain are the only reasons for rescheduling games.

Call The Hotline if it is raining – **234-3570**.

Games that need to be rescheduled will be rescheduled by **Ben Pearson who maintains the master schedule**.

No team will play 3 consecutive days. No doubleheaders.

### ***KEEPING the GAME MOVING:***

On weekends during back to back games, limit warm-up times to 10 minutes per team. Visiting team should take infield first.

Limit warm-up pitches between innings to 6 to 9. Keeps the game moving. If catcher isn't ready, have pitcher play catch with 3<sup>rd</sup> baseman.

If catcher for next inning is on base with 2 outs, a substitute runner should be used. The runner must be the last batted out.

### ***CATCHING***

Catchers (male) must wear a protective cup made of metal, plastic or fiber. Catcher must wear a catcher's helmet with the mask and throat guard, chest protector, shin guards and use a catcher's glove.

Catcher does not have to catch the third strike, the batter is out.

### ***PITCHING***

#### **Pitching rules for 2022:**

<b>Maximum pitches per day</b>	<b>70</b>
<b>Pitch 61 to 70 pitches</b>	<b>4 calendar days rest</b>
<b>Pitch 41 to 60 pitches</b>	<b>3 calendar days rest</b>
<b>Pitch 21 to 40 pitches</b>	<b>2 calendar day rest</b>
<b>Pitch 1 – 20 pitches</b>	<b>No days rest required</b>

**Batting team keeps pitch count of opposing pitcher. Check in after each inning.**

If you plan on stopping a pitcher at a certain number of pitches, confer with both scorekeepers prior to the start of the inning to avoid potential disagreement on final counts.

A player who has thrown 41 pitches during a game cannot assume the position of catcher thereafter in that game.

One pitch constitutes having pitched an inning.

Once a player is removed as a pitcher, he cannot pitch again in the same game.

If a pitcher hits 3 batters in an inning, or 4 in a game, he **MUST** be removed.

No limit on pitchers used in a game.

The pitching week is Monday through Sunday.

### ***Pitcher Eligibility forms***

These forms are important to:

- record game results
- keep tabs on pitchers to make sure no one gets hurt throwing too many pitches during the season.

To use the form:

**Before** the game, a coach from one of the teams will show who pitched in the last game and who will be pitching in that game. Make sure the pitchers for that game are eligible to pitch based on rest requirements.

**After** the game, game results and pitchers used in *today's* game should be **combined onto one form**. Also record winning and losing teams and the score. The manager whose team won the game must record the score on the Fairport Little League web site. This needs to be done with-in 24 after the game ends.

- **At game end, scorekeepers exchange, compare and confirm pitch counts for both teams.**
- **At the end of the game, each manager must enter pitch count numbers for each pitcher on his or her team.**
- **Director will send out pitcher eligibility document prior to the start of the season**

---

***Umpire Voucher***

**Fairport Little League**



Home Team Manager       <hr/> Signed	Game information		
	Date	Time	Field #
Circle one: Mustang   International   Bronco   GSB 9-10   GSB 10-12	Participating Teams  _____ vs. _____		
<b>Plate Umpire</b>			
<b>Base Umpire</b>			

**Home Team Manager** completes form. Please print responses, other than signature. Umpires will give you this form.

**Umpires** are responsible for placing completed form in Umpire Voucher Box in the concession stand directly after the game.

---

***Umpire Voucher***

F

Home Team Manager

\_\_\_\_\_  
Signed

Circle one:

Mustang   International   Bronco   GSB 9-10   GSB 10-  
12

**Plate Umpire**

**Base Umpire**

**Home Team Manager** completes form. Please print responses, other than signature

**Umpires** are responsible for placing completed form in Umpire Voucher Box in the concession stand directly after the game.

# Umpire Evaluation Form

## Fairport Little League



Evaluator	Game information		
	Date	Time	Field #
Name	Phone		
Circle one: Mustang   International   Bronco   GSB 9-10   GSB 10-12	Participating Teams _____ vs. _____		

### Plate Umpire

Consistent Strike Zone?	Yes No	Comments
Loud, Confident Voice?	Yes No	Comments
In Position for Calls?	Yes No	Comments
In Control of Game?	Yes No	Comments

Comments / Areas to Improve

### Base Umpire

Loud, Confident Voice?	Yes No	Comments
------------------------	-----------	----------

In Position for Calls?	Yes No	Comments
Comments / Areas to Improve		

---

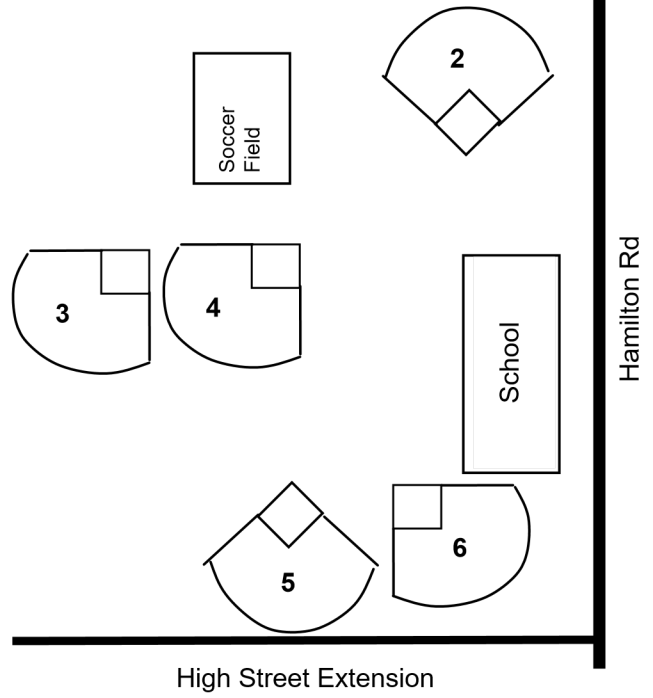
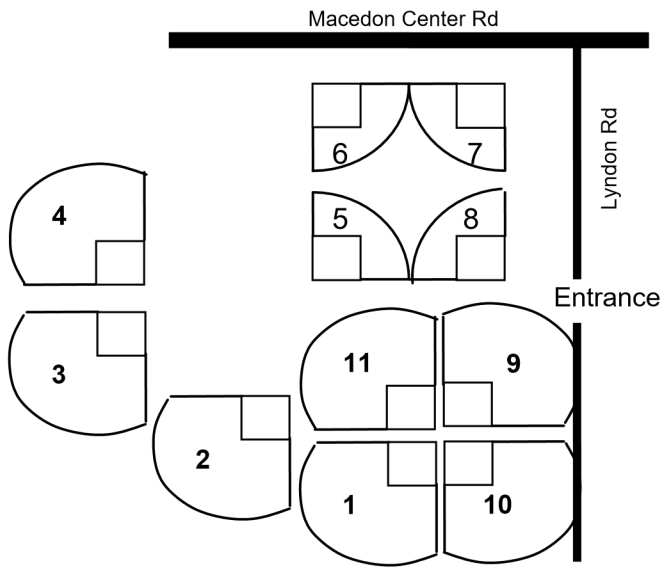
*Signed*



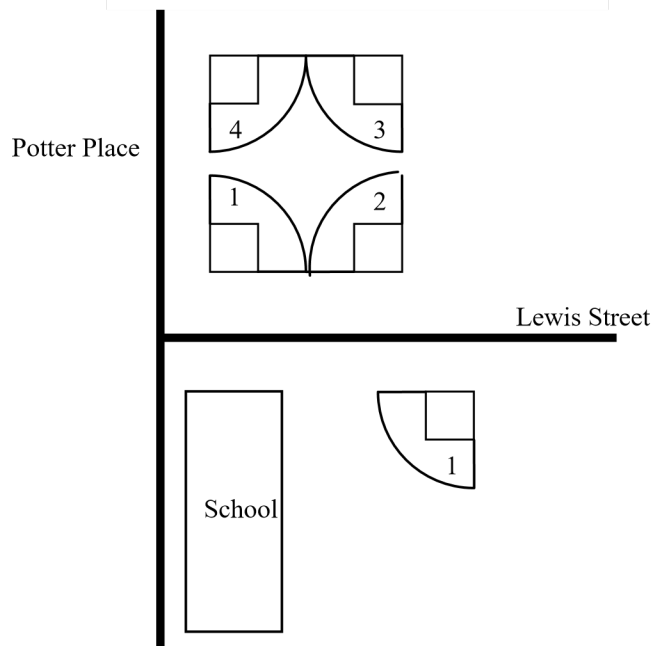
North

Lyndon Road Complex

Northside / Dudley



Potter Park / Johanna Perrin







12								
13								
14								

# Fairport Little League Good Sportsmanship Policy

References: Little League Rule Book, Section XIV, Field Decorum  
Also Section 9, The Umpire  
Back cover of rule book, Parent/Volunteer Pledge

In the interest of fairness to all Fairport Little League players, parents, coaches, other participants, and to deal with problems that may occur in a consistent way, the following Good Sportsmanship Policy is in effect.

The main focus of this policy is the behavior of parents and managers/coaches toward umpires. The principles behind the statements apply to other interactions as well.

As stated in the Fairport Little League Code of Conduct, managers and coaches are responsible for controlling the behavior of their players and fans.

**I. Acceptable coaching behavior** – if an umpire (especially a teenage umpire who is learning or a parent volunteer) **makes an error** in the form of a decision that is inconsistent with the rules, or is an incorrect interpretation or application of a rule, it is acceptable for a manager to:

Call time after the play

Ask the opposing manager to come out and join in a discussion Together meet with both umpires, discuss what just happened,

Check for the umpire's understanding of the rule, refer to the rule book as needed, and ask the umpires if they wish to change the ruling

The decision rights still rest with the umpires. A manager can not forcibly overrule an umpire's call. If the umpire recognizes he/she has made a correctible mistake, he/she should correct it.

Examples of where this could apply are infield fly rule, interference, obstruction, fair/foul, etc.

It is also acceptable for managers to discuss issues of **umpire judgment**, but this should occur only **between innings**, not during play.

An example could be "I can't hear your ball/strike calls, could you speak up?" Or "on the play at first you made the call before the runner got there".

As in the previous cases described, it is mandatory that both managers talk with the umps together, and that the discussions be instructive, not abusive.

Managers need to be sensitive to the pressure on the umpires. The manager's role is that of a teacher, not a critic. This type of conversation, if it happens, should be limited to a few minutes per occurrence, and should happen only once or twice per game.

Fairport Little League  
P.O. Box 334  
Fairport, New York 14450

NOTE regarding discussing balls and strikes – it may be appropriate, in the first or second inning of a game, to offer feedback to an umpire if his/her strike zone is consistently low, high or wide. It is NEVER appropriate to question a call on a particular pitch. Saying to an umpire, “the 3<sup>rd</sup> pitch to the Billy was a ball not a strike” is NEVER appropriate.

**IIA. Behavior that results in a warning on the first offense –**

Examples are questioning balls and strikes from the dugout (“what, there is no way that was a strike!!”); publicly criticizing calls or other umpire actions (“you blew that one!” “you weren’t in position!!”); yelling at the umpire or other team in general.

1<sup>st</sup> offense results in a warning. 2<sup>nd</sup> offense results in removal from the game, and subsequent action as defined in the rule book (4.07).

**IIB. Behavior that results in immediate removal with no warnings (Zero Tolerance) –**

Examples are swearing and inappropriate language; making hostile contact with an umpire, player, or opponent (pushing, shoving, grabbing); leaving the dugout and approaching someone in a threatening way. Again, rule 4.07 applies.

NOTE: During the game, interactions of these types should be limited to the managers and the umpires. It is always inappropriate for a manager and one or two coaches to “gang up” on the umpires. While managers are talking with umpires, coaches should stay out of the discussion. A coach who yells at an umpire who is involved in a discussion with a manager will be removed from the game immediately (Zero Tolerance).

Umpires have been told they should notify their director if any of these unacceptable behavior situations occur so appropriate follow-up action can be taken by the Board of Directors.

Board of Directors  
Fairport Little League

Fairport Little League  
P.O. Box 334  
Fairport, New York 14450

## **FAIRPORT LITTLE LEAGUE INC. CODE of CONDUCT**

Managers and Coaches participating in Fairport Little League, hereby pledge to conduct themselves in a manner which reflects positively on our community, Fairport Little League (FLL) and shall be demonstrated by adhering to the Code of Conduct as follows:

1. Practice and encourage good sportsmanship with respect through positive support for all players, coaches, umpires, volunteers and Fairport Little League Directors at every game or practice regardless of race, sex, creed or ability.
2. Follow and adhere to Fairport Little League's "Good Sportsmanship Policy".
3. Place emotional and physical well being of all persons above the desire to win.
4. Demand a drug, alcohol, performance enhancing substance, tobacco free environment and prohibit the use of these substances at all Fairport Little League events.
5. Actively participate in field preparations by helping with Field Clean Up days and volunteering in any capacity I am capable of performing.
6. Complete and submit a Little League Volunteer Application form each season prior to practicing with a team.
7. Follow ALL safety rules; there are NO exceptions, including no batting practice 30 minutes before any game.
8. Submit accurate and truthful information.
9. Managers and Coaches are responsible for controlling the behavior of their players and fans.

Violating the Fairport Little League Code of Conduct shall result in a warning, probation, suspension or expulsion from Fairport Little League.

As a condition of Managing and/or Coaching in Fairport Little League, I have read and agree to the Code of Conduct terms and conditions.

---

League and Team

---

Manager (print name) Signature Date

Coach

---

#1 (print name) Signature Date

Coach

---

#2 (print name) Signature Date

---

Coach #3 (print name) Signature Date

Completed forms shall be returned to League Directors and held on file by them for the season.





# Little League® Volunteer Application

**A COPY OF VALID GOVERNMENT ISSUED PHOTOIDENTIFICATION  
MUST BE ATTACHED TO COMPLETE THIS APPLICATION.**

Name \_\_\_\_\_ Date \_\_\_\_\_

Address \_\_\_\_\_

City \_\_\_\_\_ State \_\_\_\_\_ Zip \_\_\_\_\_

Home Phone \_\_\_\_\_ Business Phone \_\_\_\_\_

E-mail Address (optional) \_\_\_\_\_

Date of Birth \_\_\_\_\_ Social Security # \_\_\_\_\_

Occupation \_\_\_\_\_

Employer \_\_\_\_\_

Address \_\_\_\_\_

Special professional training, skills, hobbies: \_\_\_\_\_

Community affiliations (Clubs, Service Organizations, etc.): \_\_\_\_\_

Previous volunteer experience (including baseball/softball and year): \_\_\_\_\_

Do you have children in the program? Yes  No

If yes, at what level? \_\_\_\_\_

Special Certification (i.e. CPR, Medical, etc.): \_\_\_\_\_

Do you have a valid driver's license: Yes  No

Driver's License#: \_\_\_\_\_ State \_\_\_\_\_

Have you ever been convicted of or plead guilty to any crime(s): Yes  No

If yes, describe each in full: \_\_\_\_\_

Have you ever been refused participation in any other youth programs? Yes  No

If yes, explain: \_\_\_\_\_

In which of the following would you like to participate? (Check one or more.)

- League Official
- Coach
- Umpire
- Field Maintenance
- Manager
- Scorekeeper
- Concession Stand
- Other

Please list three references, at least one of which has knowledge of your participation as a volunteer in a youth program:

Name \_\_\_\_\_ Phone \_\_\_\_\_

\_\_\_\_\_  
\_\_\_\_\_  
\_\_\_\_\_

As a condition of volunteering, I give permission for the Little League organization to conduct a background check on me, which may include a review of sex offender registries, child abuse and criminal history records. I understand that, if appointed, my position is conditional upon the league receiving no inappropriate information on my background. I hereby release and agree to hold harmless from liability the local Little League, Little League Baseball, Incorporated, the officers, employees and volunteers thereof, or any other person or organization that may provide such information. I also understand that, regardless of previous appointments, Little League is not obligated to appoint me to a volunteer position. If appointed, I understand that, prior to the expiration of my term, I am subject to suspension by the President and removal by the Board of Directors for violation of Little League policies or principles.

Applicant Signature \_\_\_\_\_ Date \_\_\_\_\_

Applicant Name (please print or type) \_\_\_\_\_

*NOTE: The local Little League and Little League Baseball, Incorporated will not discriminate against any person on the basis of race, creed, color, national origin, marital status, gender, sexual orientation or disability.*

### Local League Use Only:

Background check complete by league officer \_\_\_\_\_ on \_\_\_\_\_

System(s) used for background check (minimum of one must be checked):

Sex Offender Registry  Criminal History Records

*Only attach to this application copies of background check reports that reveal convictions of this applicant.*